

# C20

Full HD Intraoral camera

## EASY TO USE, EASY TO MASTER.



### Full HD

Capture every detail for confident diagnostics.



### Bright Halo

See clearly, even in the darkest corners.



### Fog Light

Work without interruptions, even in challenging conditions.



### Automatic Flipping

Stay focused with effortless image orientation.

**New**

 **acteon**



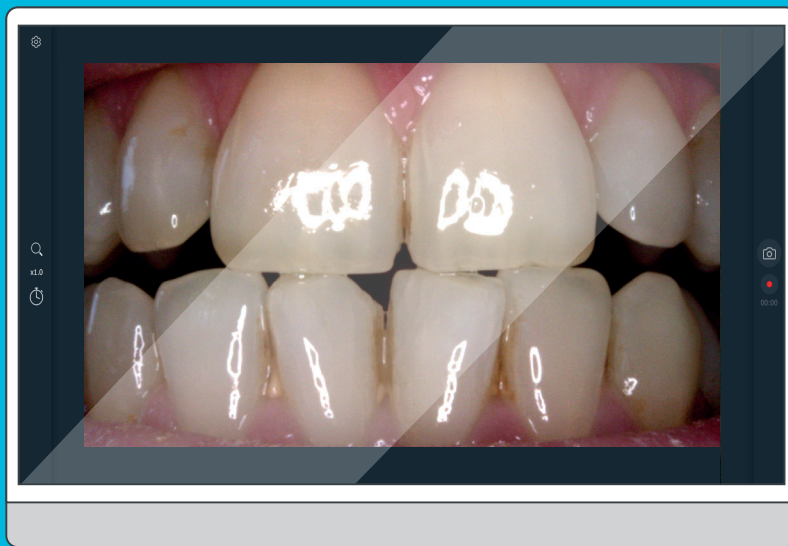
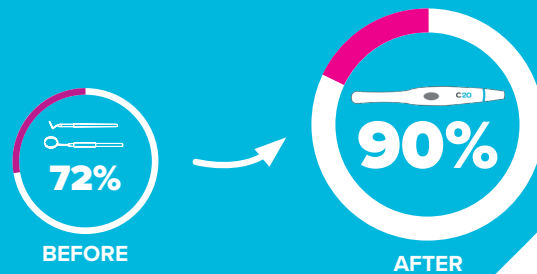
**dhpsupply.com**  
800.626.2163

# Seamlessly navigate your patient's mouth.

The C20 enable easy diagnosis, treatment planning, and patient communication.

High-quality full HD image to help your patients understand their oral health and encourage two way communication that **boosts treatment acceptance rates.**

**A 25% growth was observed using an intraoral camera.\***



**Plug & Play**



**Windows®  
& Mac® compatible**

## Seamless Compatibility

The C20 works with AIS software or your preferred imaging solution, ensuring effortless integration with your existing tools. **Simply plug and play,** no setup required.

**acteon**  
imaging suite & TWAIN



\*Oakes W. What do you mean you don't need an intraoral camera? Available at: <http://www.dentaleconomics.com/articles/print/volume-87/issue-1/features/what-do-you-mean-you-dont-need-an-intraoral-camera.html>. Accessed March 2, 2017.

Class I medical device for dental care. CE. For professional dental use only. This medical device is not refunded by health insurance organizations. Read carefully the instructions before use. Manufacturer: Sopro® ACTEON® Group (France)